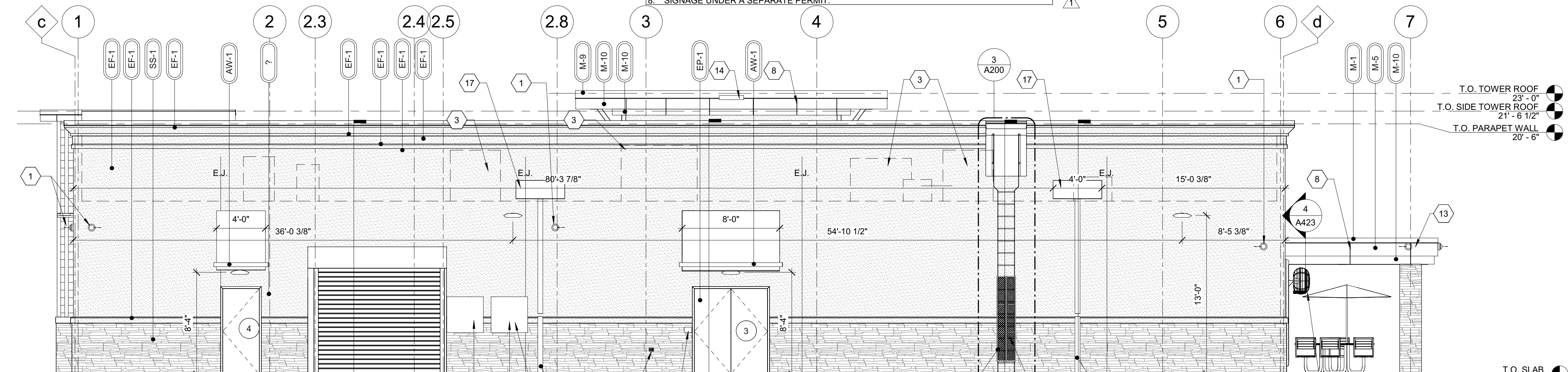
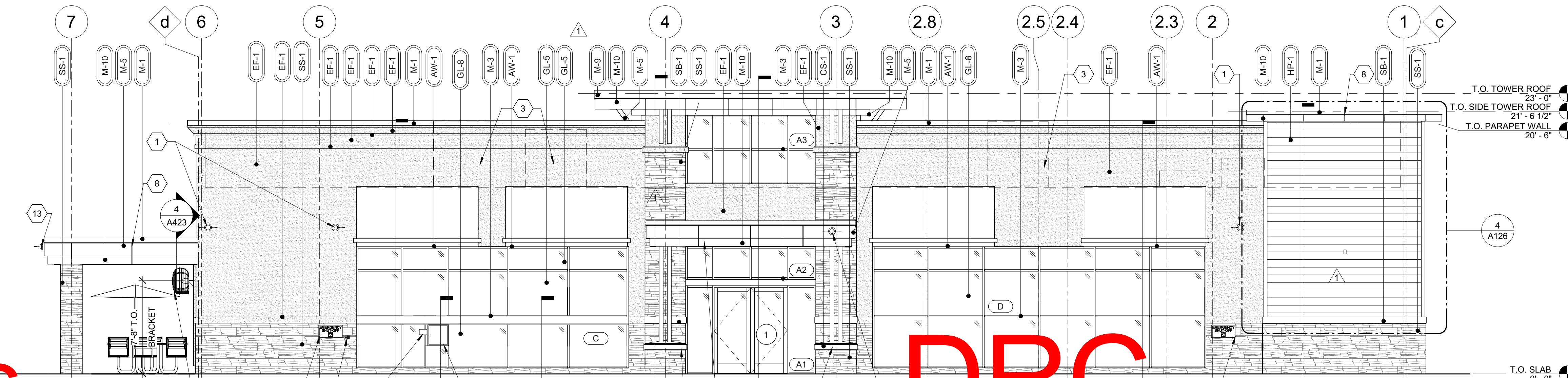


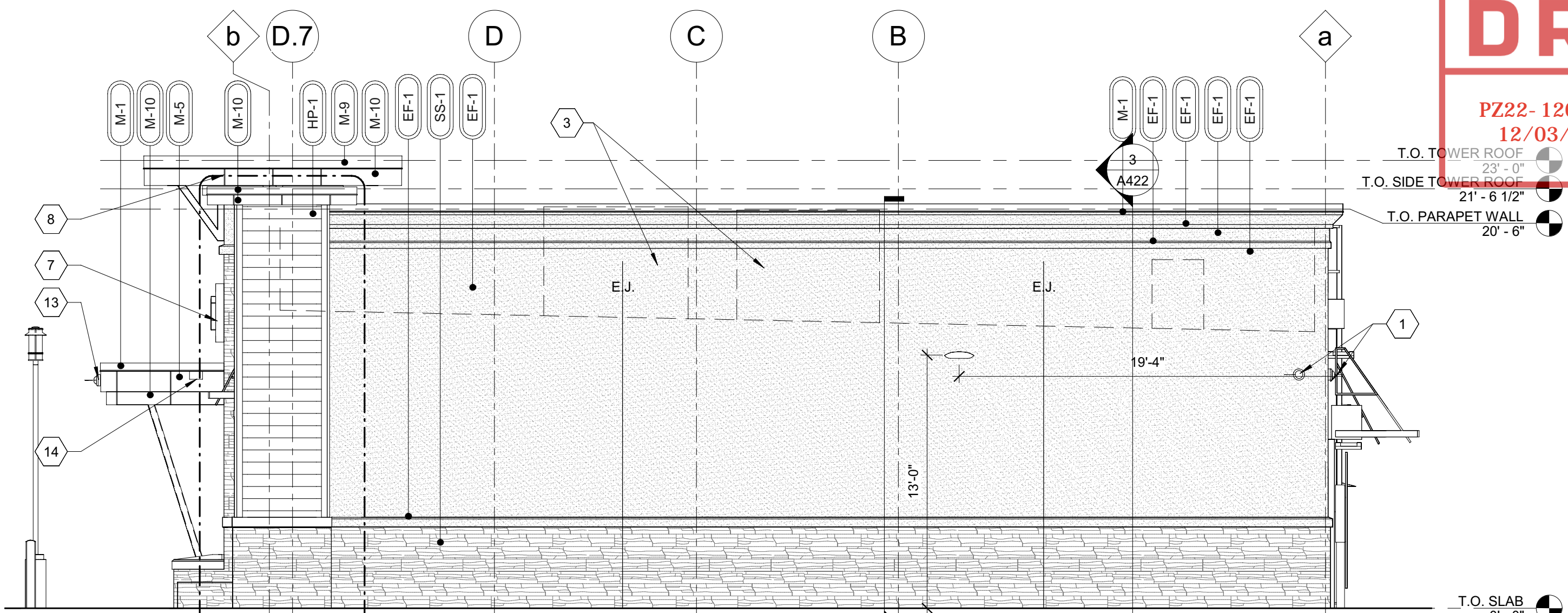
4 LEFT ELEVATION
3/16" = 1'-0"



3 RIGHT ELEVATION
3/16" = 1'-0"



2 REAR ELEVATION
3/16" = 1'-0"



1 FRONT ELEVATION
3/16" = 1'-0"

Mark S. Salopek, LLC

3638 WEST GALLOWAY DR
RICHFIELD, OH 44286

| ISSUE/REVISION RECORD | |
|-----------------------|-------------------|
| DATE | DESCRIPTION |
| 03/05/21 | PERMIT SET |
| 04/23/21 | REV1-AHJ COMMENTS |
| 06/16/21 | REV2-AHJ COMMENTS |
| 12/15/21 | REV3-AHJ COMMENTS |

RaceTrac
RACETRAC PETROLEUM, INC.
200 GALLERIA PARKWAY SOUTHEAST
SUITE 900
ATLANTA, GEORGIA 30339
(770) 431-7600

PROJECT NAME
SAMPLE & 27TH
POMPANO BEACH
FL 33069
2900 W. SAMPLE ROAD

RACETRAC STORE NUMBER
#1360
PROTOTYPE SERIES 5.5K 2.0
2020 LH MO 0305

PLAN MODIFICATION NOTICE
SPB NO. 0305 DATE 11/30/20

STANDARD PLAN BULLETINS (SPB) MODIFY THE
PROTOTYPE SERIES SET NOTED ABOVE. THE
LISTED SPB REPRESENTS THE LATEST
MODIFICATION INCORPORATED TO THIS
PROTOTYPE SERIES SET AT ORIGINAL RELEASE.
THE ISSUE/REVISION RECORD COLUMN ABOVE
LISTS ANY REVISIONS OR SPB INCORPORATED IN
THIS SET AFTER THE ORIGINAL RELEASE.
CONTACT RACETRAC ENGINEERING AND
CONSTRUCTION FOR ANY SUBSEQUENT
BULLETINS NOT INCORPORATED HEREIN.

Mark S. Salopek
Professional Seal
Date: 10/18/2022
10:18:00
A91472

PROJECT NUMBER 06/20/22
2019157.21

SHEET TITLE
EXTERIOR ELEVATIONS

SHEET NUMBER
A300

"This file was signed electronically by M. Salopek on the date and/or time stamp shown using a digital signature. Printed copies of this are not considered signed and sealed and the signature must be verified on any electronic copy."